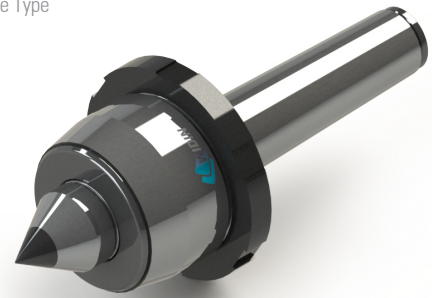
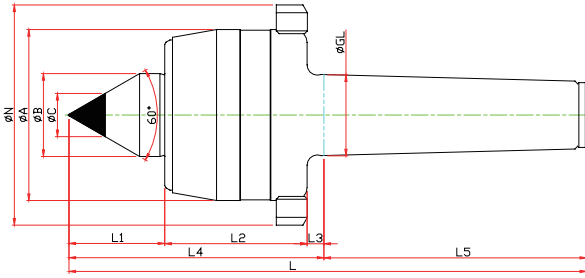


NCPCN-TYPE

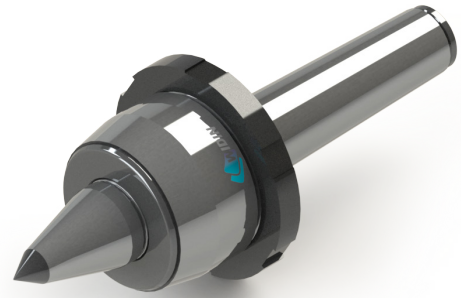
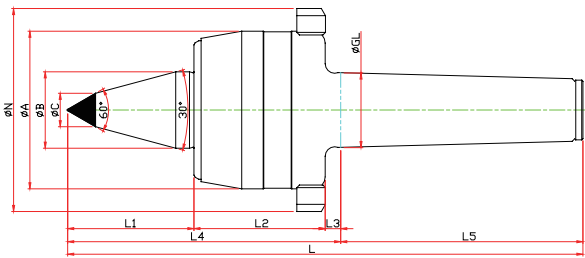
※ 너트, 초경타입 Nut, Carbide Type



Model	Order Number	Morse Taper	Dimension											Weight MAX.	R.P.M MAX.	Run Out
			GL	A	B	L1	L2	L3	L4	L5	C	N	L			
LC-3NCPCN	030113	NO.3	23,825	50	22	27	45	5	77	81	10	70	158	800	4800	0.003
LC-4NCPCN	030114	NO.4	31,267	66	32	37	55	6.5	98.5	101.5	14	85	200	1300	3800	0.003
LC-5NCPCN	030115	NO.5	44,399	82	40	45	65	6.5	116.5	129.5	18	105	246	1900	3400	0.005
LC-6NCPCN	030116	NO.6	63,384	100	45	65	80	8	153	182	25	130	335	2500	3000	0.005

NCPBCN-TYPE

※ SHAFT 확장(바이트 간섭 최소화) SHAFT EXTENSION(Minimize the bite-interference)
 ※ 너트, 초경타입 Nut, Carbide Type



Model	Order Number	Morse Taper	Dimension											Weight MAX.	R.P.M MAX.	Run Out
			GL	A	B	L1	L2	L3	L4	L5	C	N	L			
LC-3NCPBCN	031113	NO.3	23,825	50	22	47	45	5	97	81	10	70	178	410	4800	0.003
LC-4NCPBCN	031114	NO.4	31,267	66	32	53	55	6.5	114.5	101.5	14	85	216	710	3800	0.003
LC-5NCPBCN	031115	NO.5	44,399	82	40	65	65	6.5	136.5	129.5	16	105	266	1000	3400	0.005
LC-6NCPBCN	031116	NO.6	63,384	100	45	78	80	8	166	182	25	130	348	1400	3000	0.005

NCP SPECIAL

※ 사용자의 조건에 따라 주문, 제작 Customized-special production for user's condition



NC-TYPE
 NCP-TYPE
 NK-NKD TYPE
 GR-SM TYPE
 SMP-TYPE
 D50 TYPE
 HD-TYPE
 PT-TYPE
 LM CENTER
 LM-H CENTER